



**TEXAS**  
Health and Human  
Services

---

Texas Department of State  
Health Services

# **AOR Responsibilities**

---

**Texas Ambulance  
Association**



TEXAS  
Health and Human  
Services

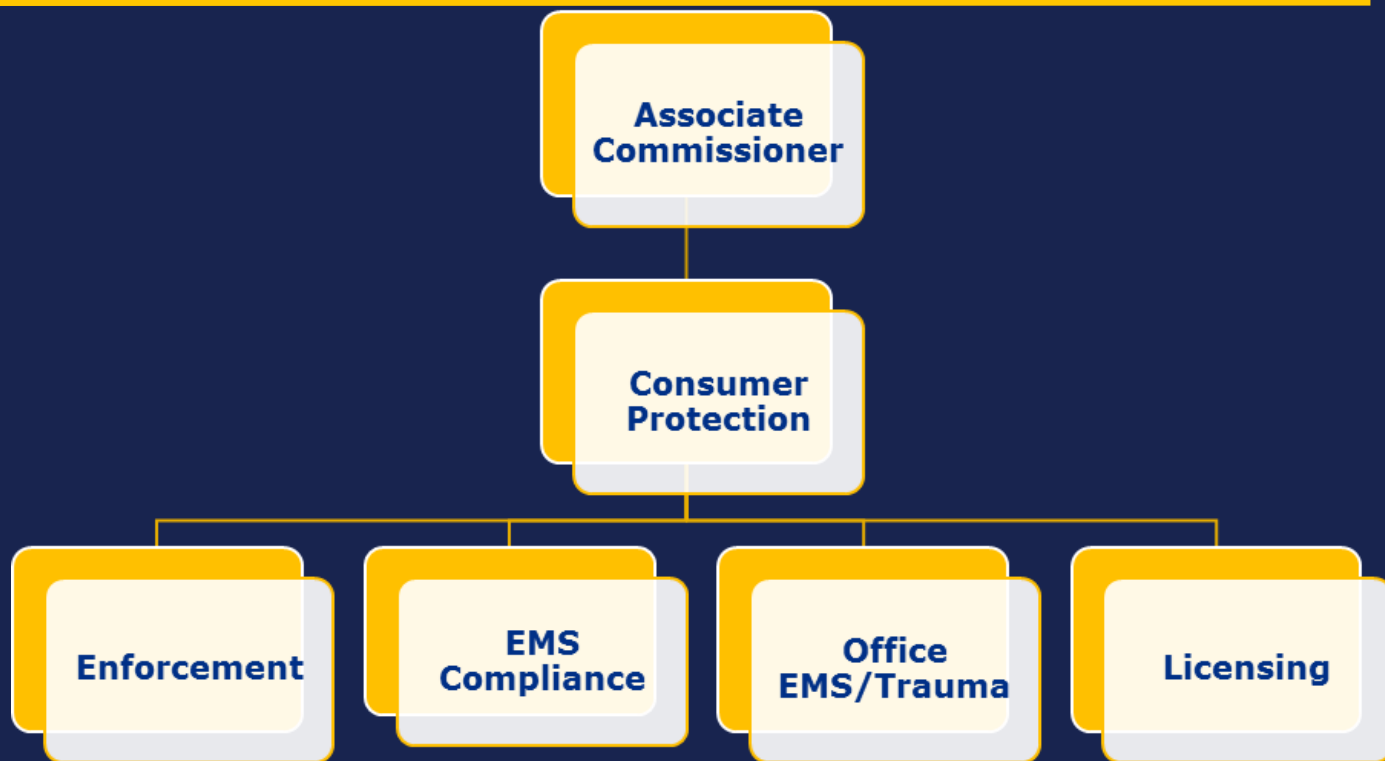
Texas Department of State  
Health Services

# Introduction

- The Department
- Rules and Regulations
- Administrator of Record
- Relationships
- Drug Diversions
- Resources and Information



# Office of EMS/Trauma Systems Chart



**Each of these departments have a  
role within the  
TEXAS EMS system**



**TEXAS**  
Health and Human Services

Texas Department of State  
Health Services

# Office of EMS/Trauma Systems Chart



**TEXAS**  
Health and Human Services

Texas Department of State  
Health Services

# State Law or Rules

---



**TEXAS**  
Health and Human Services

Texas Department of State  
Health Services



# Only Legislation can add to or change Chapter 773



TEXAS

Health and Human Services

Texas Department of State  
Health Services

1. Chapter 773 is the law and **can not** be waived by DSHS
2. You have to be able to refer any rule adopted by DSHS to the statute with Chapter 773
3. If DSHS does not have authority in Chapter 773 then DSHS cannot gain authority by writing it in rule
4. Once you open up Chapter 773 to add or change language you always run the risk of other changes to the current law being attached

# Administrator of Record

---

Areas of responsibility and knowledge:

- EMS dispatch processes
- EMS billing processes
- Medical control accountability
- Quality improvement processes for EMS operations
- Annually complete hours of continuing education related to Texas and federal laws and rules related to EMS



TEXAS  
Health and Human Services

Texas Department of State  
Health Services

# AOR

---

**How many hours are needed annually to maintain a person's AOR status?**

A. 4

B. 8

C. 48

D. 16



TEXAS  
Health and Human Services

Texas Department of State  
Health Services



# AOR

---

## Survey and Inspection Process

- Surveys and inspections – open book test
- If deficiencies noted–
  - Survey will follow up with a POC within 30 days
  - Inspections will follow up with a POC within 5 days



TEXAS  
Health and Human Services  
Texas Department of State  
Health Services

# AOR

---

## Survey and Inspection Process

- Areas for possible deficiencies:
  - Going out of business plan
  - Plan for PCR's
  - Quality Assurance
  - Jurisprudence documentation
  - EMS crew questions
  - Anaphylaxis training



TEXAS  
Health and Human Services

Texas Department of State  
Health Services

# AOR

## TAC 157.16 Disciplinary Actions

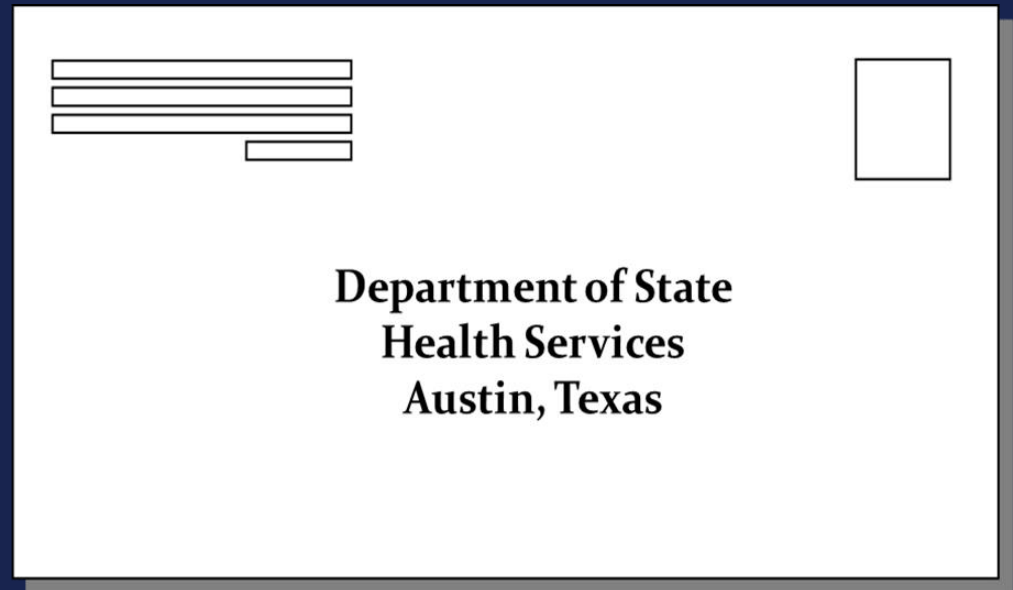
**When you receive  
communication from DSHS**



**TEXAS**  
Health and Human Services

Texas Department of State  
Health Services

**Reply  
!!!!!!**



# AOR

---

## TAC 157.16 Disciplinary Actions

### Possible Outcomes

*Manager Letter (not formal  
disciplinary action)*

*Finding of Fact*

*Written Reprimand*

*Administrative Fine*

*Suspension*

*Revocation*



TEXAS  
Health and Human Services

Texas Department of State  
Health Services

# AOR

---

## **TAC 157.16 Disciplinary Actions** **Administrative Penalty**

- The penalty may not exceed \$7,500 for each violation. The board by rule shall establish gradations of penalties in accordance with the relative seriousness of the violation.
- Each day a violation continues may be considered a separate violation.



TEXAS  
Health and Human Services

Texas Department of State  
Health Services

# AOR

---

**How many for profit EMS Providers  
can an AOR be employed or  
otherwise compensated by?**

A. 0

B. 1

C. 2

D. 3



TEXAS  
Health and Human Services

Texas Department of State  
Health Services

# Relationships

Who should we have relationships within EMS?

1. Medical Directors
2. Local RAC and EMT-F
  - a. Participation is required (157.11 n 3)
3. DSHS EMS Field Offices
4. Hospital Systems
5. Council of Governments
6. Other State Agencies
  - a. TDEM
  - b. DFPS, DADS



TEXAS  
Health and Human Services

Texas Department of State  
Health Services

# Medical Director Relationships

## Texas Law or Rules that MD's need to have knowledge

- Texas Administrative Code Chapter 157
- Texas Administrative Code Chapter 197  
Rule §197.1 through 6
- Texas Health and Safety Code Ch. 773



TEXAS  
Health and Human Services

Texas Department of State  
Health Services





# Medical Director Responsibilities

## **Off-line Medical Director Shall**

- Approve level of care being rendered by EMS personnel before permitted to provide such care to the public
- Establish and monitor compliance of EMS personnel performance
- Establish & monitor compliance with training guidelines which meet or exceed the minimum standards set forth in the Texas Department of State Health Services EMS certification regulations



TEXAS  
Health and Human Services

Texas Department of State  
Health Services

# Medical Director Responsibilities

## **Off-line Medical Director Shall**

- Develop, implement and revise protocols and/or standing delegating orders, if appropriate, governing prehospital care and medical aspects of patient triage, transport, transfer, dispatch, extrication, rescue, and radio telephone-telemetry communication by EMS
- Direct an effective system audit and quality assurance program



TEXAS  
Health and Human Services

Texas Department of State  
Health Services

# Medical Director Responsibilities

## **Off-line Medical Director Shall**

- Determine standards and objectives for **all medically related aspects of operation** of the EMS including the inspection, evaluation and approval of the system's performance specifications
- Function as the primary liaison between the EMS administration, staff and the local medical community



TEXAS  
Health and Human Services

Texas Department of State  
Health Services

# Medical Director Responsibilities

## **Off-line Medical Director Shall**

- Develop a letter or agreement or contract between the MD(s) and the EMS administration outlining the specific responsibilities and authority of each
- Take or recommend appropriate remedial or corrective measures for EMS personnel, in conjunction with local EMS administration

**Example: Suspension of Care.** He or she may suspend a certified individual from medical care duties for due cause pending review and evaluation



**TEXAS**  
Health and Human Services

Texas Department of State  
Health Services

# Medical Director Responsibilities

---

**How many EMS Providers can a Medical Director Provide oversight for without getting a waiver?**

A. 4

B. 8

C. 20

D. 50



**TEXAS**  
Health and Human Services

Texas Department of State  
Health Services

# Medical Director Responsibilities

Can a medical director be employed by an EMS Provider that has been **excluded** by Medicare, Medicaid or Chip?



TEXAS  
Health and Human Services

Texas Department of State  
Health Services

Yes

or

No

# Drug Diversion



**TEXAS**  
Health and Human Services

Texas Department of State  
Health Services





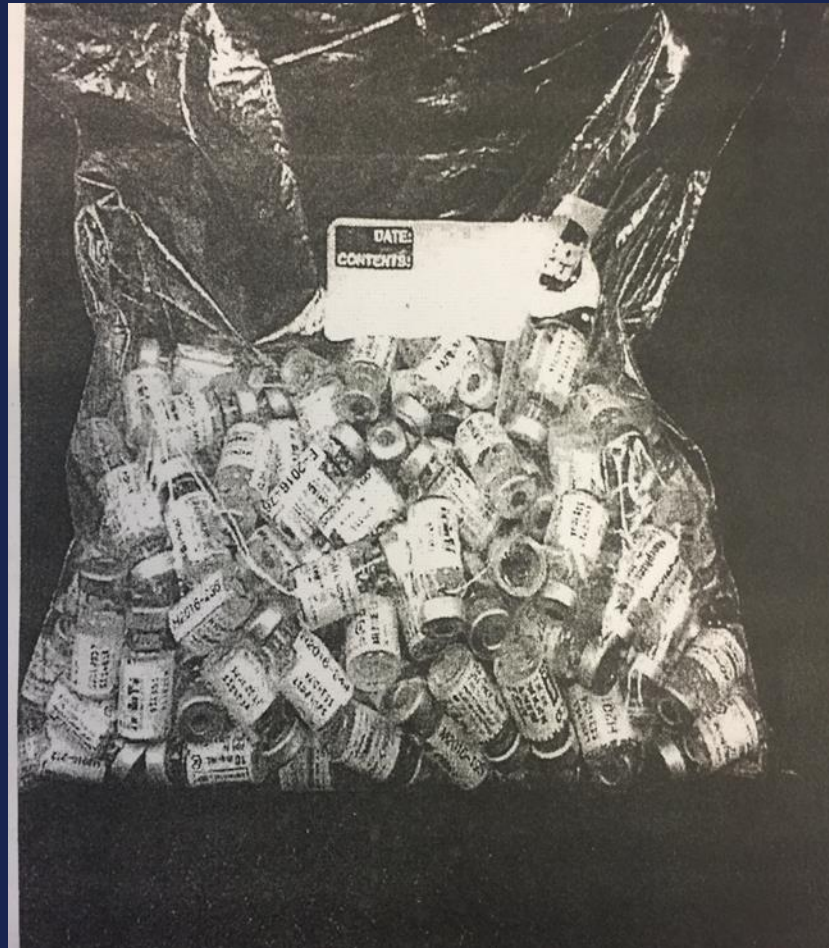
# Drug Problem

## 154 Over 3 Months



**TEXAS**  
Health and Human Services

Texas Department of State  
Health Services





# Drug Problem

## Remove & Replace



TEXAS  
Health and Human Services

Texas Department of State  
Health Services



# Drug Problem

## Summary

It's clear that EMS medical directors and management staff must be vigilant in their oversight of implementation, administration and monitoring of controlled substances within their agencies to best serve the public and avoid running afoul of investigation and incurring significant penalties.....*Dr. Jeff Beeson DO*



TEXAS  
Health and Human Services

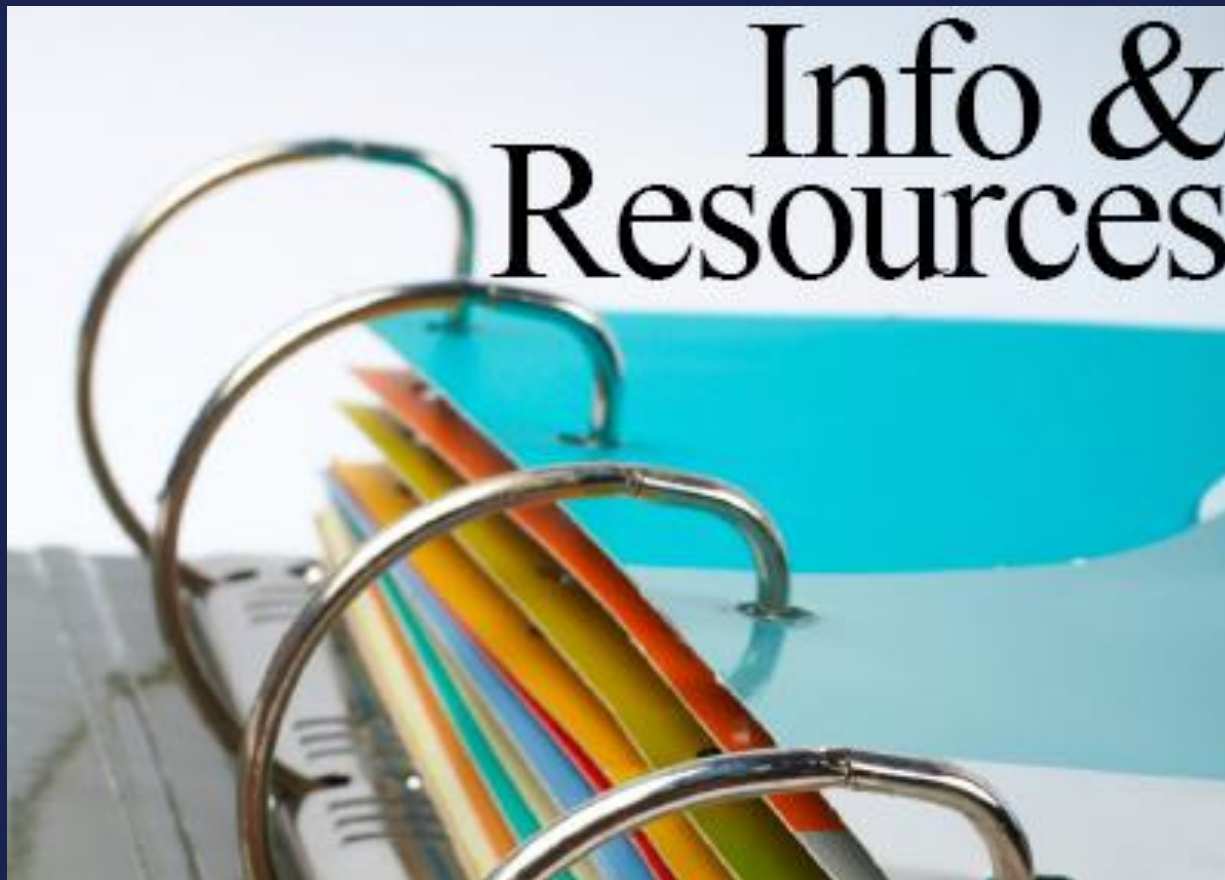
Texas Department of State  
Health Services

# Resources & Info



**TEXAS**  
Health and Human Services

Texas Department of State  
Health Services



# The Number of EMS Providers

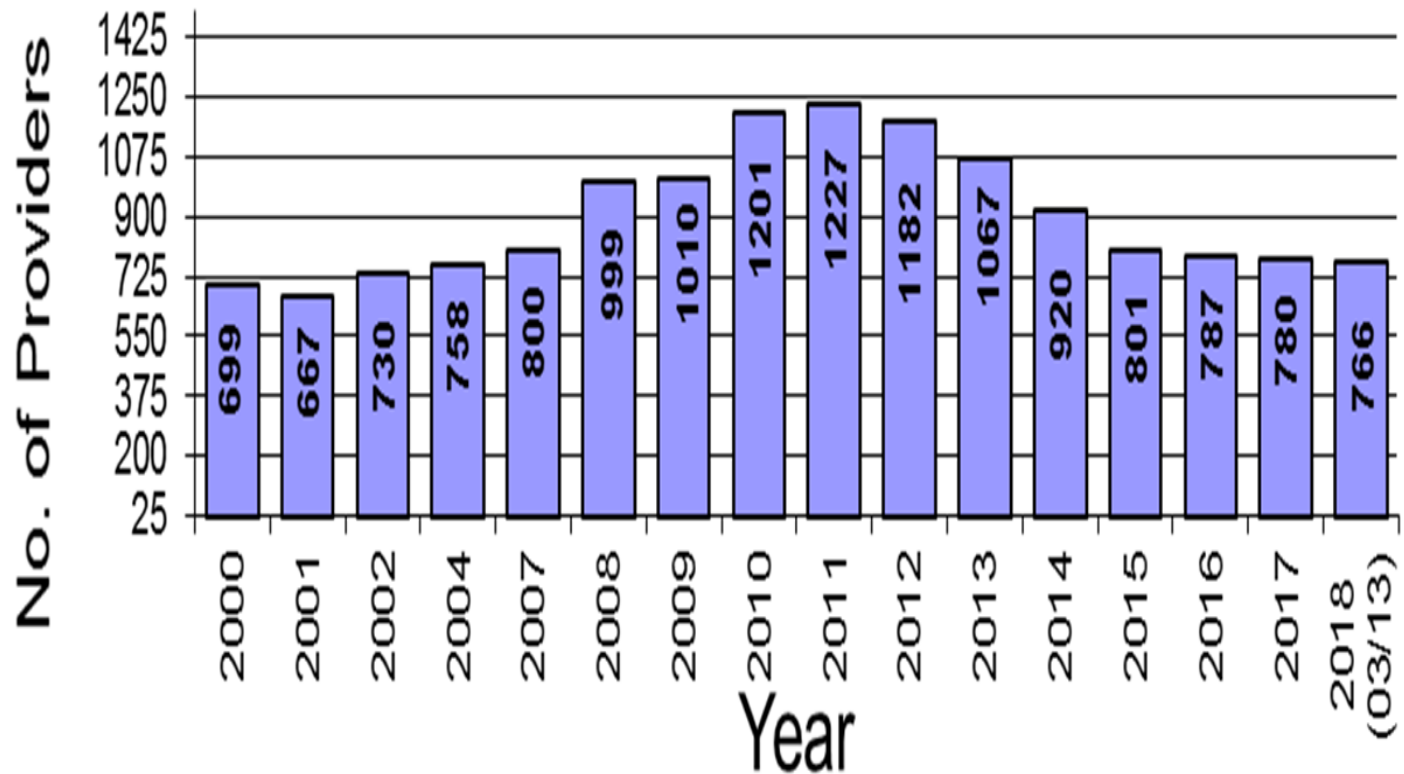


TEXAS

Health and Human Services

Texas Department of State  
Health Services

## EMS PROVIDERS





TEXAS  
Health and Human Services

Texas Department of State  
Health Services

# Texas EMS Personnel

(As of March 25, 2018)

Certification	Numbers	Average Age
ECA	2274	47
EMT	34,267	39
AEMT	3410	50
EMTP	19,533	44
Licensed Paramedic	7597	48



# DSHS Information - Newsletter



TEXAS

Health and Human Services

Texas Department of State  
Health Services

<http://www.dshs.texas.gov/emstraumasystems/>

## NEWSLETTER



Sign up at the  
EMS/Trauma website



# DSHS Information – Online Services



TEXAS

Health and Human Services

Texas Department of State  
Health Services



TEXAS  
Health and Human  
Services

Texas Department of State  
Health Services

## Online Licensing Services

[Help & Support](#) | [Contact Us](#)

### Check License Status or Search for a License

***It is not necessary to register or login to view or search for a license or certification.*** Begin your [license search](#) here to verify that a license holder has a current license with the Department of State Health Services. You can search by name, license type, city or county.

### Apply for a New License

To apply for an initial license, please see the [Online Licensing Eligibility](#) page to check if your license type is supported before you [register as a new user](#). If you have previously registered using this system, it is not necessary to create another user registration to apply for a new license.

### Renew Your License

To renew an existing license, please verify that your license type is [eligible for online renewal](#). Once you have confirmed that your license may be renewed online, please login with your existing user ID and password, or [register as a new user](#).

### Asbestos Notifications

***It is not necessary to login to view asbestos notifications.*** [Search for a notification](#) by project location, date, name or notification number. If you wish to submit/amend an asbestos notification, you may [register as a new user](#) if you have not previously registered using this system.

#### Returning User

User ID:

Password:

[Forgot user ID?](#)  
[Forgot password?](#)

#### New User



Create a new online account as a first time user. Log in with the password emailed to you to access online services.

[Register as a new user](#)

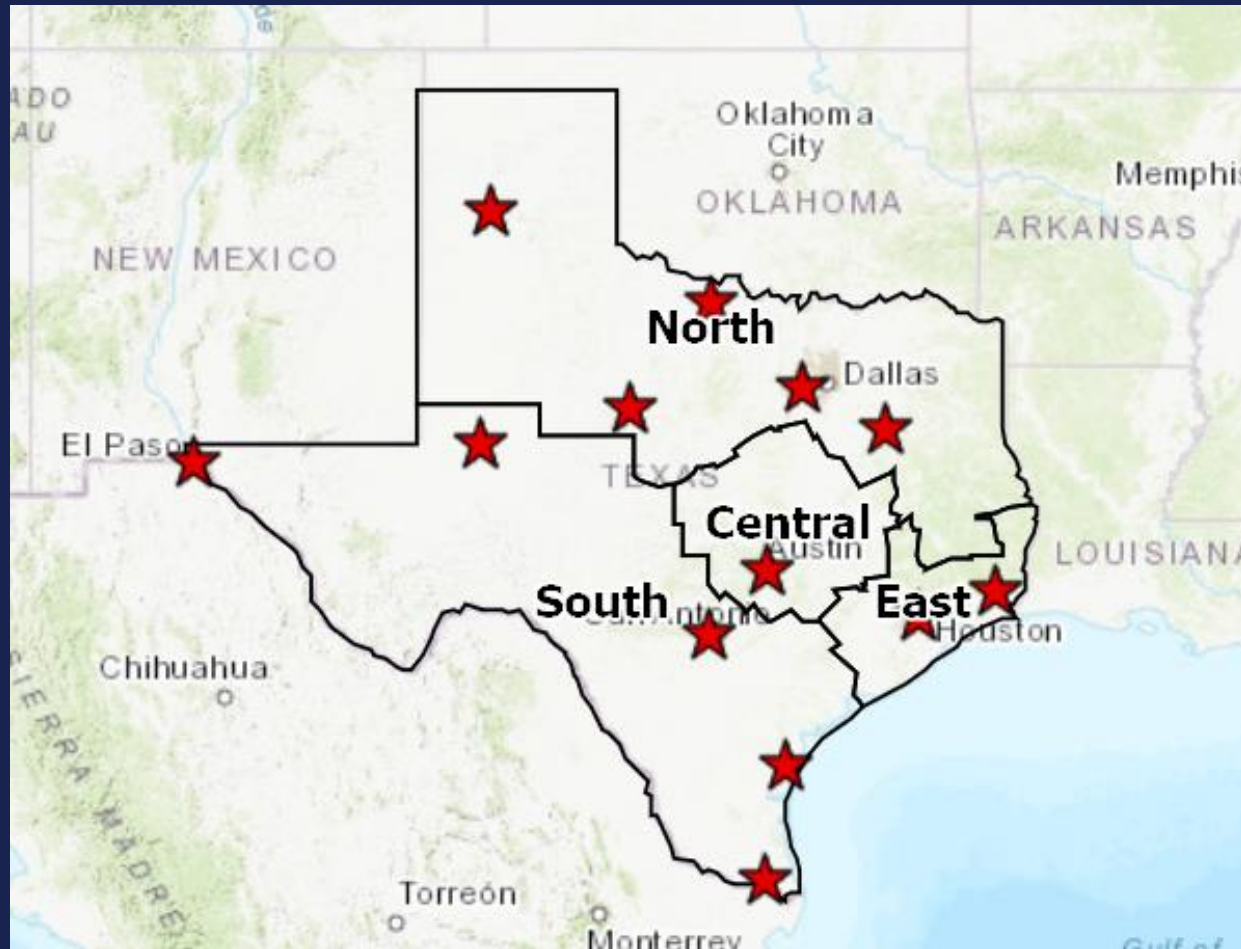
# DSHS Information – Interactive Map



TEXAS

Health and Human Services

Texas Department of State  
Health Services







**Texas Department of State  
Health Services**

[illegible]

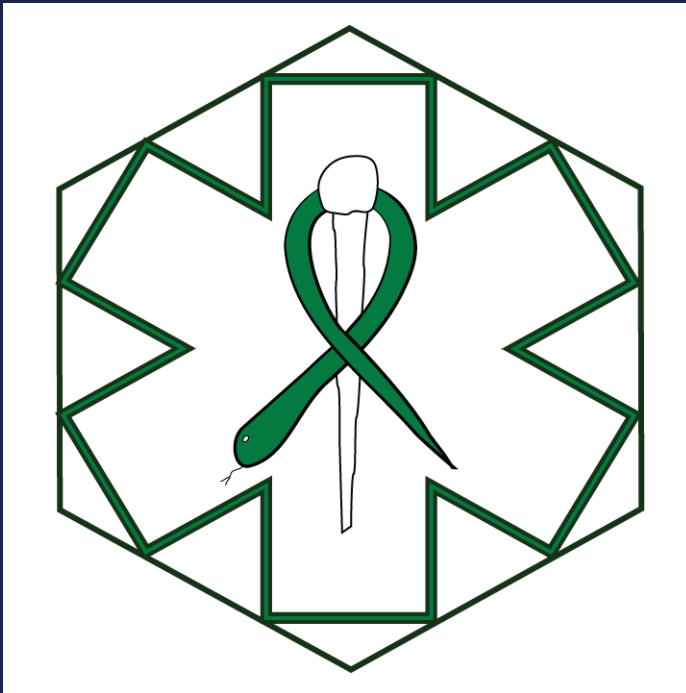


TEXAS

Health and Human Services

Texas Department of State  
Health Services

# The Code Green Campaign



Safe Call Now

**1-206-459-3020**

Share the Load

**1-888-731-3473**

National Suicide Prevention  
Lifeline

**1-800-273-8255**



TEXAS

Health and Human Services

Texas Department of State  
Health Services



## Interstate Commission for EMS Personnel Practice

5010 E. Trindle Road, Suite 202  
Mechanicsburg, PA 17050

Phone (833) 473-7542

[manz@emsreplica.org](mailto:manz@emsreplica.org)

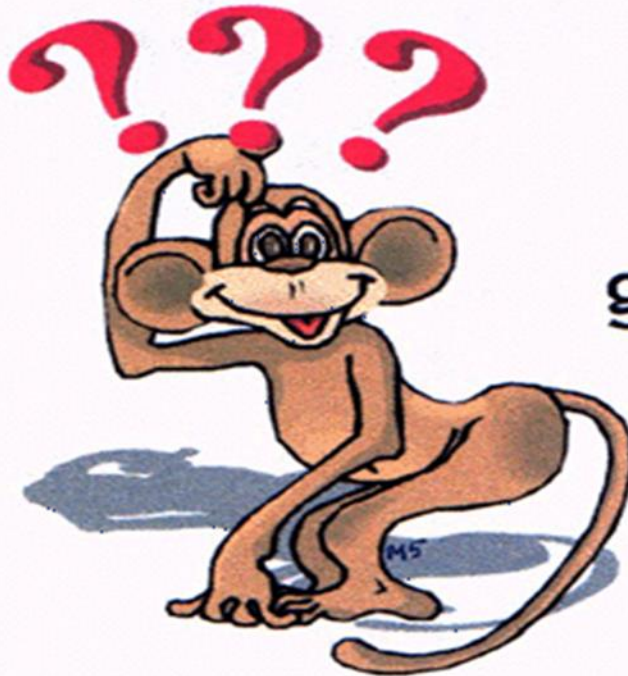
[www.emscompact.gov](http://www.emscompact.gov)

# *Any questions or issues?*



TEXAS  
Health and Human  
Services

Texas Department of State  
Health Services



Questions  
are  
guaranteed in  
life;  
Answers  
aren't.



**TEXAS**  
Health and Human  
Services

---

Texas Department of State  
Health Services

# **Thank you**

---

## **Texas Ambulance Association**

# **Reyes Flores III**

## **EMS – South Group**

---

Office: 361/878-3447

Cell: 361/290-6241

Fax: 361/883-4414



**TEXAS**  
Health and Human Services

Texas Department of State  
Health Services

[Reyes.flores@dshs.texas.gov](mailto:Reyes.flores@dshs.texas.gov)